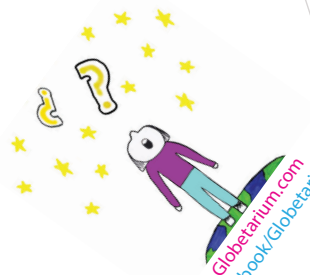


We'll add your info here

And logo here



Globetarium.com  
Facebook/Globetarium



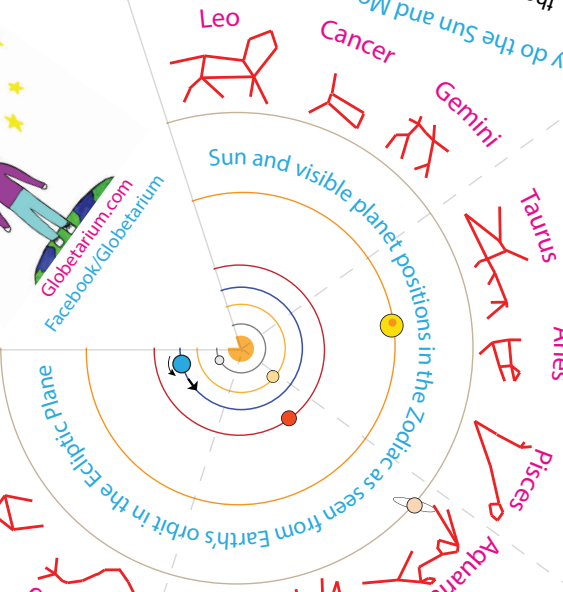
About 300X larger diameter

During a Solar Eclipse the Moon blocks the Sun in a small region that moves across Earth



About 300X closer  
Although the Sun is much larger than the Moon, they appear to be about the same size in the sky because the Sun is also much more distant. During a solar eclipse if the Moon is relatively closer the Moon blocks the Sun entirely (total eclipse of the Sun uncovered (annular eclipse this past October).

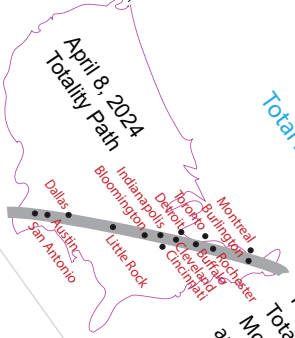
Why do the Sun and Moon look the same size?



Sun and visible planet positions in the Zodiac as seen from Earth's orbit in the ecliptic plane

Sky During Total Eclipse  
April 8, 2024 starting 3:08 pm

After the partial eclipse starts around 2 pm from the right side of the Sun, the Moon will totally obscure the Sun in Indianapolis starting at about 3:06 pm for several minutes. During the eclipse Venus and Jupiter, and maybe Mercury, Mars, and Saturn, will appear along the ecliptic.



April 8, 2024  
Totality Path

Total Eclipse April 8, 2024!

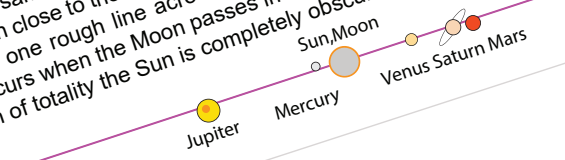
The solar eclipse will completely block the Sun for over four minutes on the Totality Path. Each month the Moon passes between the Sun and Earth (New Moon), and each month it crosses the ecliptic plane twice. When it crosses between the Earth and Sun so it eclipses the Sun.

Why are the Sun, Moon, and Planets in a line?

Earth and the visible planets orbit the Sun in nearly the same plane (the ecliptic plane), and the Moon orbits the Earth in close to the same plane. So we see the Sun, Moon, and planets in one rough line across the night sky (the ecliptic). A solar eclipse occurs when the Moon passes in front of the Sun along the ecliptic. In the path of totality the Sun is completely obscured and the sky turns dark.

Facebook/Globetarium

Globetarium.com



Looking West

Looking South

Looking East

