



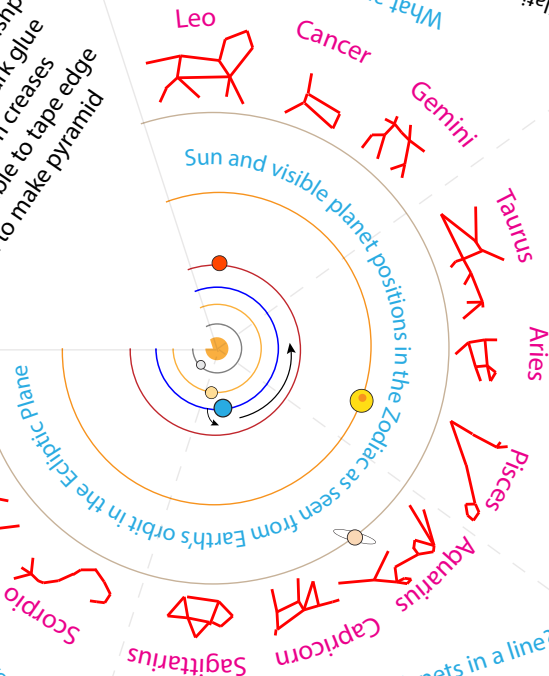
- 1 Print double-sided (heavy paper best)
- 2 Cut out this wedge from pentagon
- 3 Kids punch out stars with pushpin, or dab with glow-in-dark glue
- 4 Fold with glow-in-dark pushpin,
- 5 Lay flat on table to tape edge
- 6 Open to make pyramid

Constellations are groups of stars in memorable shapes that divide up the sky in regions as viewed from Earth. The modern system is based on ancient Babylonian and Greek constellations. The imaginary lines connecting stars into constellations are not always very evocative, so the famous children's illustrator H.A. Rey ("Curious George") connected the dots in different ways to better fit the constellation names.

H.A. Rey's version of Gemini (Twins)



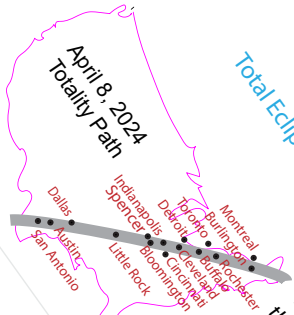
Old version of Gemini (Twins)



Morning and Night Sky July 25, 2023

All week: Venus, Mars and Mercury visible right after sunset along the Ecliptic near the bright star Regulus, then set in sequence. Jupiter and Saturn visible before sunrise. Waxing First Quarter Moon (half of Moon visible) on July 25.

Globetarium.com



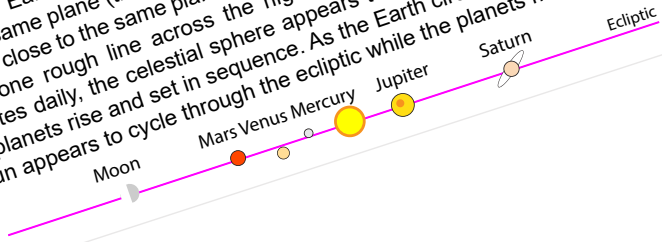
April 8, 2024
Totality Path

Total Eclipse Countdown: 37 weeks!

Next year's solar eclipse will completely block the Sun for over four minutes on the Totality Path. Each month the Moon passes between the Sun and Earth (New Moon), and each month it crosses the ecliptic plane twice. When it crosses between the Earth and Sun so it eclipses the Sun.

Why are the Sun, Moon, and Planets in a line?

Earth and the visible planets orbit the Sun in nearly the same plane (the ecliptic plane), and the Moon orbits the Earth in close to the same plane. So we see the Sun, Moon, and planets in one rough line across the night sky (the ecliptic). As the Earth rotates daily, the celestial sphere appears to rotate, and the Sun, Moon, and planets rise and set in sequence. As the Earth circles the Sun each year, the Sun appears to cycle through the ecliptic while the planets move along it.

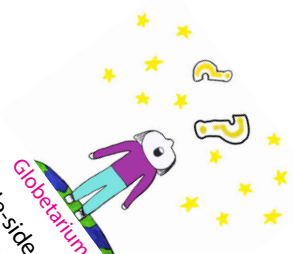
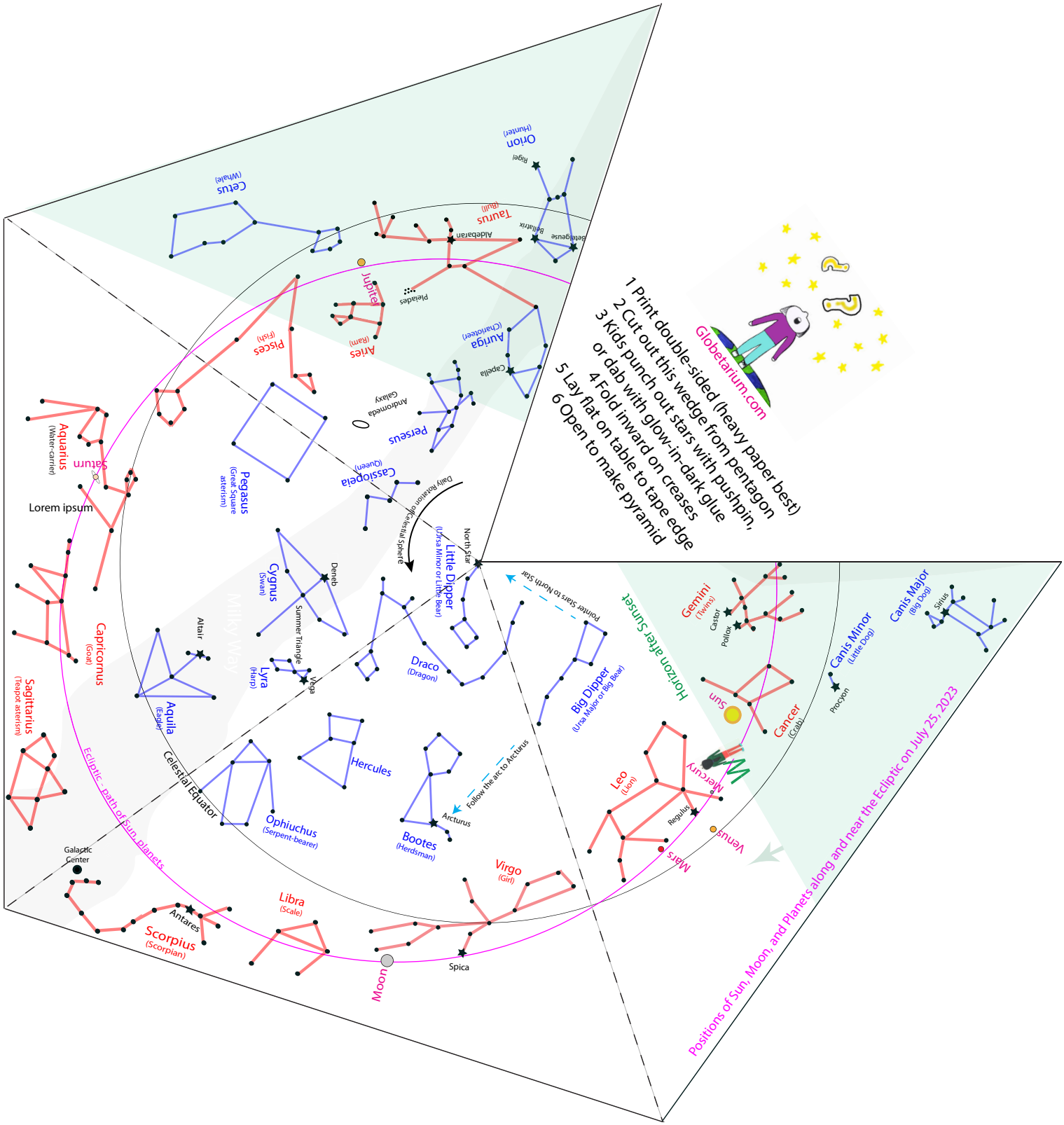


Ecliptic path of planets and Sun

Horizon Before Sunrise

Ecliptic path of planets and Sun

Horizon After Sunset



Globetarium.com

- 1 Print double-sided (heavy paper best)
- 2 Cut out this wedge from pentagon
- 3 Kids punch out stars with pushpin, or dab with glow-in-dark glue
- 4 Fold inward on creases
- 5 Lay flat on table to tape edge
- 6 Open to make pyramid

Positions of Sun, Moon, and Planets along and near the Ecliptic on July 25, 2023

Lorem ipsum