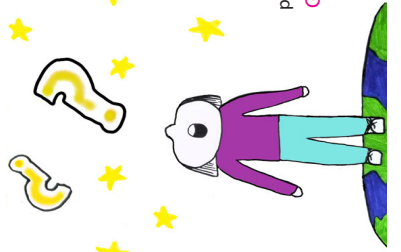


Follow us at [Twitter.com/Globetarium](https://twitter.com/Globetarium)

Star finder,
celestial sphere,
pinpoint planetarium
Globetarium.com

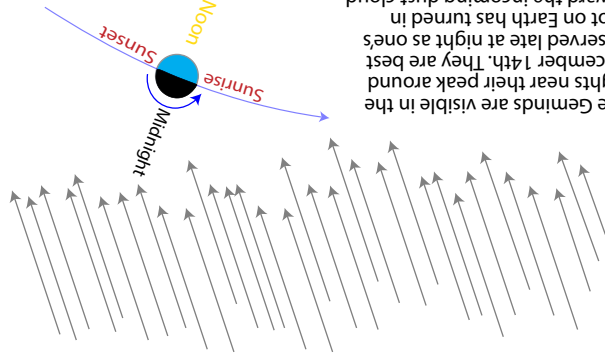


Know the sky • Know the ecliptic • Know the G

Like us at [Facebook.com/globetarium](https://facebook.com/globetarium)

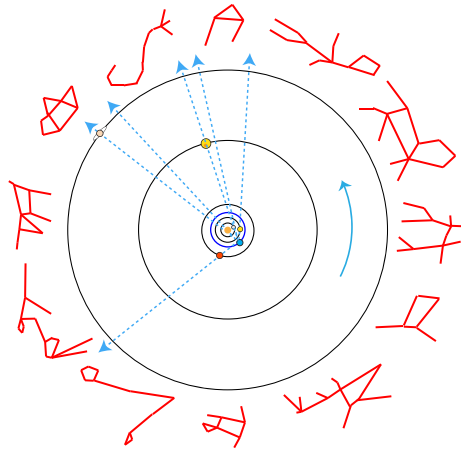
Sun and visible planet positions
on December 15, 2018

The Geminids are visible in the nights near their peak around December 14th. They are best observed late at night as one's spot on Earth has turned in toward the incoming dust cloud left by Asteroid Phaethon.

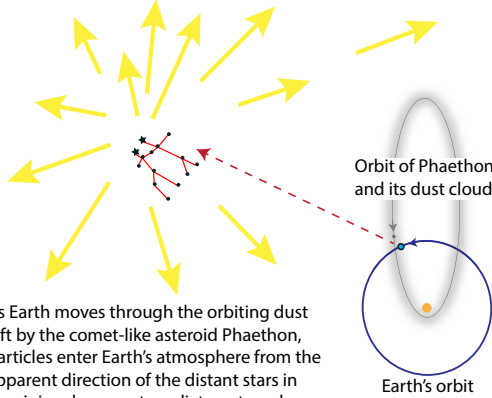


Geminids Peak the Week of December 10-17

December 2018 Night Sky Highlights



Geminids Appear to Radiate from Gemini



As Earth moves through the orbiting dust left by the comet-like asteroid Phaethon, particles enter Earth's atmosphere from the apparent direction of the distant stars in Gemini and appear to radiate outward

Geminids: Every December, Earth moves through the dust cloud surrounding the comet-like asteroid Phaethon, creating a meteor shower as the particles enter the atmosphere. Since Earth is moving in its orbit in the direction of the constellation Orion, the dust enters the atmosphere from that direction, and the meteors appear to radiate out from a point near Gemini.

Comet Wirtanen: Earth could see its brightest comet in many years in mid-December. Comet Wirtanen reaches its closest approach to Earth on December 16th after passing by the Sun. It should be most visible around December 12th while it is getting close to Earth but still not too far from the Sun. Look for it moving from Taurus between the Pleiades and Aldebaran, and through Auriga past the bright star Cappella.